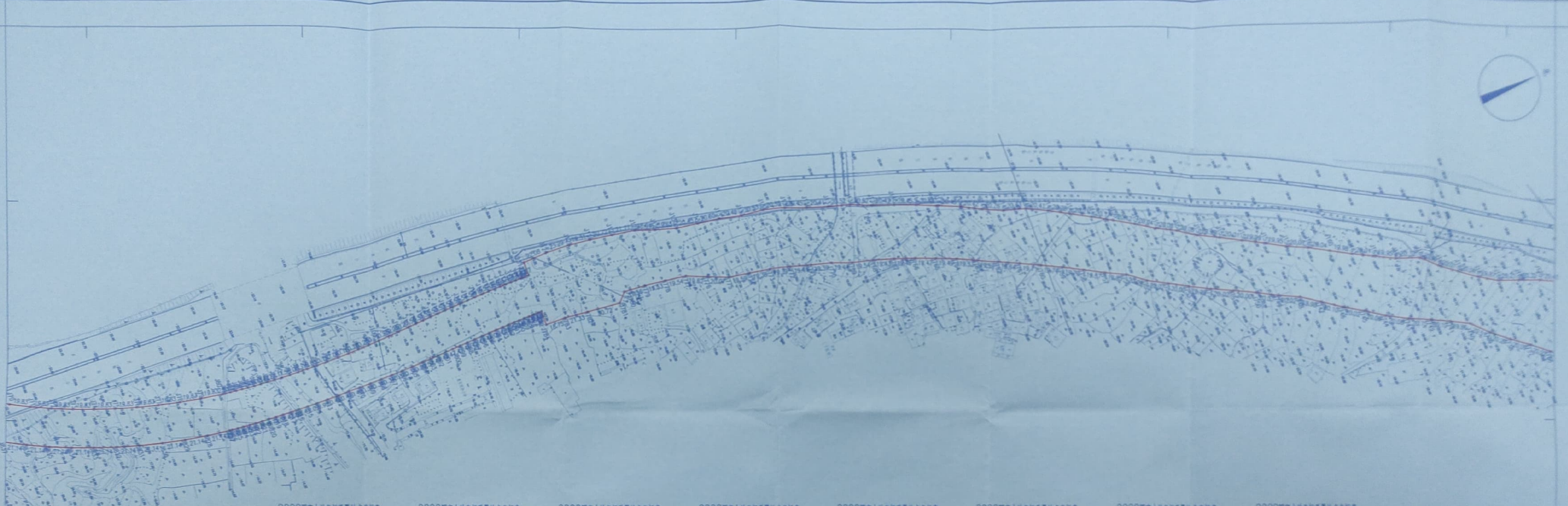




国道G324线紫山互通至黄塘后店段公路工程勘测界定图



2000 国家大地坐标系点坐标表				2000 国家大地坐标系点坐标表				2000 国家大地坐标系点坐标表				2000 国家大地坐标系点坐标表				2000 国家大地坐标系点坐标表				2000 国家大地坐标系点坐标表				2000 国家大地坐标系点坐标表				2000 国家大地坐标系点坐标表																																																																																																																																																																																																																																																																																																															
点号	X	Y	高程	点号	X	Y	高程	点号	X	Y	高程	点号	X	Y	高程	点号	X	Y	高程	点号	X	Y	高程	点号	X	Y	高程	点号	X	Y	高程	点号	X	Y	高程	点号	X	Y	高程																																																																																																																																																																																																																																																																																																				
J153	2770173.970	40367786.780	20.06	J172	2770493.160	40367993.536	19.76	J181	2770713.268	40368115.545	19.94	J218	2771028.859	40368327.451	20.02	J229	2771382.196	40368543.503	17.45	J248	2771596.363	40368700.589	20.15	J267	2771840.616	40368828.473	19.80	J286	2772106.297	40368961.785	20.02	J305	2772399.315	40369104.015	20.23	J314	2772620.144	40369242.172	20.00	J321	2772826.037	40369377.740	20.01	J331	2773168.791	40369504.861	20.36	J349	2773481.823	40369633.515	20.28	J368	2773819.208	40369765.140	20.02	J374	2773525.883	40369816.430	18.24	J383	2773747.069	403698152.880	8.45	J392	2773933.120	40369848.152	20.00	J402	2774137.268	40369880.726	20.03	J410	2774161.037	40369921.874	20.12	J428	2774355.875	40369954.533	19.80	J437	2774537.945	40369988.804	20.02	J445	2774723.827	40369920.093	19.39	J454	2774938.641	40369959.079	18.24	J464	2775196.190	40369988.167	20.00	J472	2775385.821	40369986.529	20.03	J481	2775629.132	40369944.216	19.80	J490	2775833.203	40369954.794	19.90	J500	2776054.777	40369914.443	19.95	J507	2776243.752	40369927.667	19.80	J516	2776453.252	40369882.884	19.85	J525	2776688.985	40369838.156	20.03	J534	2776958.326	40369794.374	19.90	J543	2777249.372	40369858.112	10.03	J553	2777566.985	40369828.154	20.00	J562	2777918.730	40369801.820	10.00	J571	2778294.441	40369763.566	19.82	J581	2778694.545	40369704.367	20.02	J590	2779119.267	40369641.118	10.00	J600	2779574.751	40369581.118	19.94	J609	2779986.589	40369521.564	20.02	J618	2779943.803	40369530.845	19.95	J627	2779993.845	40369528.845	19.85	J636	2779993.845	40369528.845	19.85	J645	2779993.845	40369528.845	19.85	J654	2779993.845	40369528.845	19.85	J663	2779993.845	40369528.845	19.85	J672	2779993.845	40369528.845	19.85	J681	2779993.845	40369528.845	19.85	J690	2779993.845	40369528.845	19.85	J700	2779993.845	40369528.845	19.85	J709	2779993.845	40369528.845	19.85	J718	2779993.845	40369528.845	19.85	J727	2779993.845	40369528.845	19.85	J736	2779993.845	40369528.845	19.85	J745	2779993.845	40369528.845	19.85	J754	2779993.845	40369528.845	19.85	J763	2779993.845	40369528.845	19.85	J772	2779993.845	40369528.845	19.85	J781	2779993.845	40369528.845	19.85	J790	2779993.845	40369528.845	19.85	J800	2779993.845	40369528.845	19.85	J809	2779993.845	40369528.845	19.85	J818	2779993.845	40369528.845	19.85	J827	2779993.845	40369528.845	19.85	J836	2779993.845	40369528.845	19.85	J845	2779993.845	40369528.845	19.85	J854	2779993.845	40369528.845	19.85	J863	2779993.845	40369528.845	19.85	J872	2779993.845	40369528.845	19.85	J881	2779993.845	40369528.845	19.85	J890	2779993.845	40369528.845	19.85	J900	2779993.845	40369528.845	19.85	J909	2779993.845	40369528.845	19.85	J918	2779993.845	40369528.845	19.85	J927	2779993.845	40369528.845	19.85	J936	2779993.845	40369528.845	19.85	J945	2779993.845	40369528.845	19.85	J954	2779993.845	40369528.845	19.85	J963	2779993.845	40369528.845	19.85	J972	2779993.845	40369528.845	19.85	J981	2779993.845	40369528.845	19.85	J990	2779993.845	40369528.845	19.85	J1000	2779993.845	40369528.845	19.85

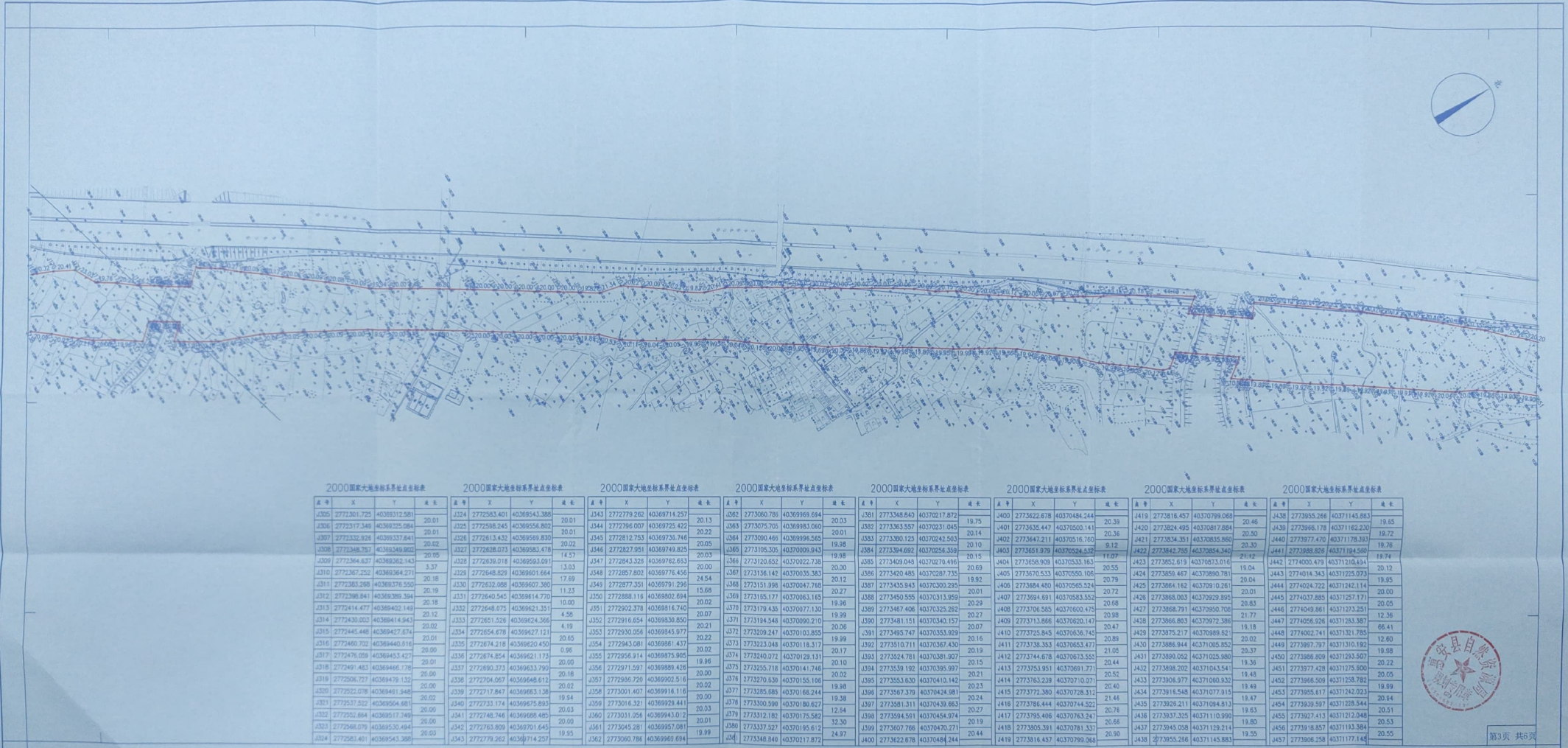


2024年10月数字化制图

2024年10月数字化制图  
2000国家大地坐标系, 中央子午线为120度  
1985国家高程基准  
1995年成果

南京南士地工程技术有限公司  
测绘资质  
证书编号: 苏测资字[2013]第00001号  
经营范围: 工程测量、不动产测绘、地理信息工程

国道G324线紫山互通至黄塘后店段公路工程勘测定界图



2000国家大地坐标系点坐标表			2000国家大地坐标系点坐标表			2000国家大地坐标系点坐标表			2000国家大地坐标系点坐标表			2000国家大地坐标系点坐标表			2000国家大地坐标系点坐标表			2000国家大地坐标系点坐标表					
点号	X	Y	点号	X	Y	点号	X	Y	点号	X	Y	点号	X	Y	点号	X	Y	点号	X	Y			
J305	277301.725	40369312.581	J324	2772583.401	40369543.388	J343	2772779.262	40369714.237	J362	2773060.788	40369969.694	J381	2773348.840	40370217.872	J400	2773622.678	40370484.244	J419	2773818.457	40370799.068	J438	2773955.266	40371145.883
J306	2772317.349	40369325.084	J325	2772588.245	40369556.802	J344	2772786.007	40369725.432	J363	2773075.708	40369983.080	J382	2773363.557	40370231.045	J401	2773635.447	40370500.141	J420	2773824.495	40370817.884	J439	2773966.178	40371162.230
J307	2772332.926	40369337.641	J326	2772613.432	40369569.830	J345	2772812.783	40369738.746	J364	2773090.466	40369996.565	J383	2773390.125	40370242.503	J402	2773647.211	40370516.700	J421	2773834.351	40370835.860	J440	2773977.470	40371178.387
J308	2772348.757	40369349.902	J327	2772628.073	40369583.478	J346	2772827.051	40369749.825	J365	2773105.305	40370009.843	J384	2773394.692	40370256.359	J403	2773651.979	40370524.832	J422	2773842.785	40370854.340	J441	2773988.878	40371194.580
J309	2772364.837	40369362.143	J328	2772638.018	40369593.091	J347	2772834.328	40369762.663	J366	2773120.652	40370022.738	J385	2773409.045	40370276.496	J404	2773658.908	40370533.183	J423	2773852.619	40370863.016	J442	2774000.479	40371210.494
J310	2772367.252	40369364.271	J329	2772648.828	40369601.684	J348	2772857.802	40369776.456	J367	2773136.452	40370035.383	J386	2773420.085	40370287.735	J405	2773670.533	40370550.106	J424	2773859.467	40370880.781	J443	2774014.343	40371225.073
J311	2772383.298	40369376.550	J330	2772662.888	40369610.380	J349	2772877.351	40369791.298	J368	2773151.998	40370047.788	J387	2773435.943	40370300.235	J406	2773684.450	40370565.524	J425	2773864.182	40370910.281	J444	2774024.722	40371242.114
J312	2772398.841	40369389.384	J331	2772640.545	40369614.770	J350	2772888.116	40369802.694	J369	2773185.177	40370063.185	J388	2773450.555	40370313.959	J407	2773694.691	40370583.552	J426	2773868.003	40370929.893	J445	2774039.885	40371257.171
J313	2772414.477	40369402.149	J332	2772648.075	40369621.351	J351	2772902.378	40369816.740	J370	2773179.435	40370077.130	J389	2773467.406	40370325.282	J408	2773706.585	40370600.475	J427	2773868.791	40370950.708	J446	2774049.881	40371273.251
J314	2772430.002	40369414.943	J333	2772651.528	40369624.366	J352	2772916.654	40369830.850	J371	2773194.548	40370090.210	J390	2773481.151	40370330.157	J409	2773732.865	40370620.147	J428	2773866.803	40370972.588	J447	2774056.926	40371283.387
J315	2772445.446	40369427.674	J334	2772654.678	40369627.121	J353	2772930.056	40369845.977	J372	2773209.247	40370103.855	J391	2773495.747	40370333.829	J410	2773732.845	40370636.745	J429	2773875.217	40370989.621	J448	2774062.741	40371291.785
J316	2772460.702	40369440.618	J335	2772674.218	40369620.450	J354	2772943.081	40369861.437	J373	2773223.042	40370118.517	J392	2773510.011	40370346.430	J411	2773738.353	40370653.477	J430	2773886.944	40371005.852	J449	2774070.797	40371301.192
J317	2772479.059	40369453.427	J336	2772674.854	40369621.173	J355	2772956.314	40369875.905	J374	2773240.072	40370129.131	J393	2773529.192	40370358.907	J412	2773744.678	40370663.711	J431	2773890.052	40371025.880	J450	2773989.609	40371293.507
J318	2772491.483	40369466.178	J337	2772690.373	40369633.790	J356	2772971.597	40369889.426	J375	2773255.718	40370141.746	J394	2773539.030	40370368.997	J413	2773753.951	40370671.071	J432	2773898.202	40371043.541	J451	2773977.428	40371275.000
J319	2772502.078	40369479.132	J338	2772704.067	40369646.612	J357	2772986.720	40369902.516	J376	2773270.630	40370156.244	J395	2773559.192	40370378.142	J414	2773763.239	40370683.071	J433	2773906.977	40371060.332	J452	2773986.509	40371287.762
J320	2772522.078	40369491.948	J339	2772717.847	40369653.138	J358	2773001.407	40369916.116	J377	2773285.885	40370168.244	J396	2773567.303	40370384.981	J415	2773772.380	40370728.312	J434	2773916.548	40371077.915	J453	2773995.617	40371294.023
J321	2772537.522	40369504.681	J340	2772733.174	40369665.893	J359	2773016.321	40369929.441	J378	2773300.590	40370180.627	J397	2773581.311	40370394.663	J416	2773786.444	40370744.522	J435	2773926.211	40371094.813	J454	2773999.597	40371298.544
J322	2772551.684	40369517.749	J341	2772748.746	40369678.485	J360	2773031.056	40369943.012	J379	2773312.183	40370195.282	J398	2773594.991	40370404.974	J417	2773795.408	40370763.247	J436	2773937.325	40371110.990	J455	2773992.413	40371210.048
J323	2772568.079	40369530.494	J342	2772763.809	40369690.645	J361	2773045.281	40369957.081	J380	2773327.527	40370206.612	J399	2773607.766	40370416.271	J418	2773805.391	40370781.337	J437	2773945.058	40371129.214	J456	2773999.857	40371303.584
J324	2772581.491	40369543.388	J343	2772779.262	40369714.237	J362	2773060.788	40369969.694	J381	2773348.840	40370217.872	J400	2773622.678	40370484.244	J419	2773818.457	40370799.068	J438	2773955.266	40371145.883	J457	2773996.258	40371177.144

泉州大地岩土工程有限公司



2024年10月编写  
 2000国家大地坐标系,中央子午线120度  
 1985国家高程基准  
 1996年版图式

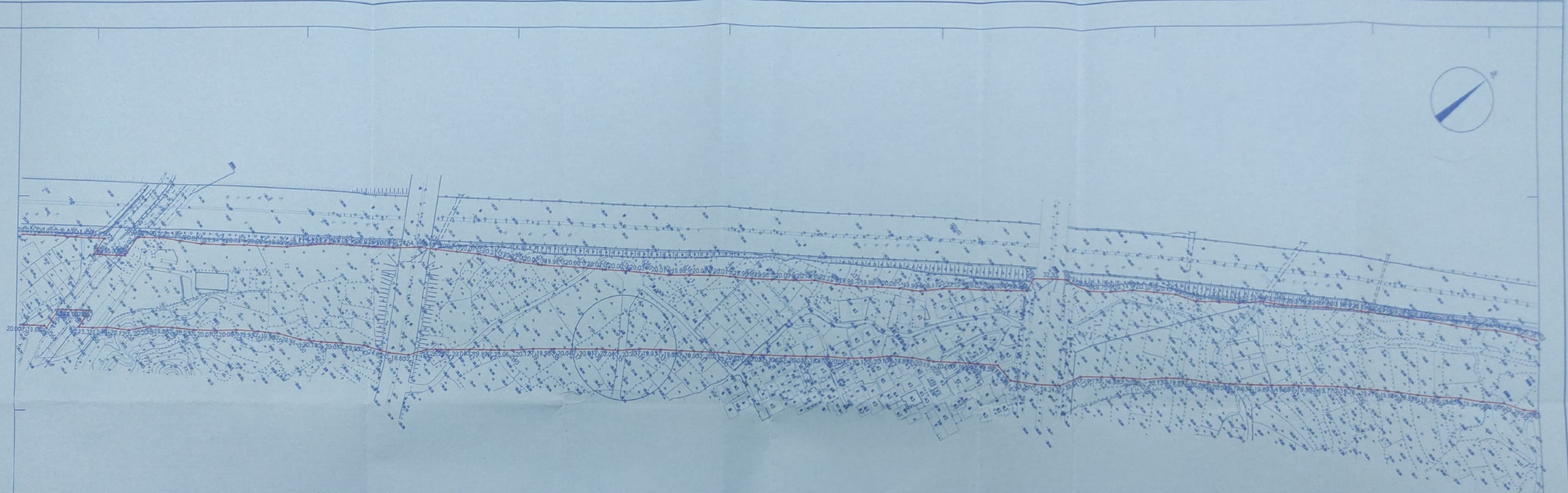
1:2000

第3页 共6页

泉州大地岩土工程有限公司(Q)  
 测绘资质:乙级  
 证书编号:乙测字35502539  
 发证机关:福建省自然资源厅



国道G324线紫山互通至黄塘后店段公路工程勘测定界图



2000国家大地坐标系点坐标表				2000国家大地坐标系点坐标表				2000国家大地坐标系点坐标表				2000国家大地坐标系点坐标表				2000国家大地坐标系点坐标表				2000国家大地坐标系点坐标表				2000国家大地坐标系点坐标表							
点号	X	Y	高程	点号	X	Y	高程	点号	X	Y	高程	点号	X	Y	高程	点号	X	Y	高程	点号	X	Y	高程	点号	X	Y	高程	点号	X	Y	高程
J609	2771989.666	40389116.559	10.05	J628	2771863.751	40388993.180	10.00	J647	2771673.964	40388847.112	19.99	J666	2771380.016	40388633.885	10.06	J685	2771196.467	40388468.216	19.92	J704	2770878.403	40388281.851	19.89	J723	2770548.646	40388092.636	13.21	J742	2770351.462	40387955.528	20.15
J610	2771996.278	40389108.993	6.00	J629	2771856.221	40388986.599	10.00	J648	2771659.495	40388833.315	19.91	J667	2771371.840	40388627.991	21.59	J686	2771199.293	40388478.126	19.99	J705	2770861.575	40388271.255	20.00	J724	2770537.368	40388065.750	9.49	J743	2770333.450	40387944.483	20.08
J611	2771991.780	40389105.046	10.00	J630	2771848.691	40388980.019	9.98	J649	2771644.341	40388820.389	19.95	J668	2771389.578	40388614.355	10.47	J687	2771161.548	40388468.187	19.95	J706	2770844.651	40388260.589	20.00	J725	2770529.340	40388060.697	19.28	J744	2770316.514	40387935.700	20.06
J612	2771984.230	40389098.464	10.00	J631	2771841.176	40388973.460	9.97	J650	2771629.498	40388807.062	19.92	J669	2771380.078	40388608.237	10.47	J688	2771145.284	40388457.217	19.95	J707	2770827.727	40388249.942	2.31	J745	2770264.489	40388067.584	20.02				
J613	2771984.230	40389098.464	10.00	J632	2771833.651	40388966.915	9.97	J651	2771614.280	40388784.205	19.90	J670	2771371.974	40388602.424	9.97	J689	2771125.571	40388446.438	19.98	J708	2770810.802	40388239.285	20.00	J746	2770263.666	40387912.760	20.10				
J614	2771969.170	40389085.304	10.00	J633	2771826.116	40388960.381	9.97	J652	2771599.157	40388781.271	19.90	J671	2771363.881	40388606.624	9.97	J690	2771111.131	40388446.694	19.98	J709	2770796.878	40388228.628	20.00	J747	2770267.637	40387900.834	19.98				
J615	2771961.840	40389078.724	10.00	J634	2771818.570	40388953.855	9.97	J653	2771582.870	40388769.829	19.90	J672	2771355.739	40388609.036	9.97	J691	2771094.685	40388425.393	19.97	J710	2770772.954	40388217.971	20.00	J748	2770261.613	40387888.702	19.98				
J616	2771954.110	40389072.143	10.00	J635	2771811.014	40388947.350	9.97	J654	2771566.516	40388758.521	20.29	J673	2771347.607	40388605.818	9.97	J692	2771078.166	40388414.340	19.86	J711	2770772.938	40388215.442	4.75	J749	2770263.884	40387878.409	20.02				
J617	2771946.530	40389065.563	10.00	J636	2771803.446	40388940.852	9.97	J655	2771548.390	40388749.424	20.29	J674	2771343.538	40388602.179	4.99	J693	2771060.216	40388405.398	20.06	J712	2770763.335	40388209.525	46.80	J750	2770261.793	40387869.969	20.03				
J618	2771939.050	40389058.983	10.00	J637	2771795.871	40388934.366	9.97	J656	2771531.874	40388738.361	20.04	J675	2771339.874	40388605.929	4.49	J694	2771044.570	40388403.451	18.69	J713	2770763.181	40388208.000	8.45	J751	2770261.585	40387868.805	20.00				
J619	2771931.521	40389052.402	10.00	J638	2771792.839	40388931.775	3.99	J657	2771515.484	40388726.750	19.92	J676	2771332.434	40388603.920	16.17	J695	2771027.498	40388403.140	19.86	J714	2770769.257	40388208.343	20.00	J752	2770261.330	40387868.819	20.02				
J620	2771923.991	40389045.822	10.00	J639	2771782.076	40388944.383	16.58	J658	2771499.075	40388715.474	19.91	J677	2771321.277	40388608.027	6.44	J696	2771010.272	40388377.266	20.12	J715	2770769.257	40388208.343	19.97	J753	2770261.193	40387868.805	20.00				
J621	2771916.461	40389039.242	10.00	J640	2771777.585	40388940.347	6.04	J659	2771482.543	40388734.346	19.93	J678	2771305.333	40388605.364	20.12	J697	2770994.162	40388366.815	20.12	J716	2770769.257	40388208.343	20.00	J754	2770261.013	40387868.805	20.00				
J622	2771908.931	40389032.661	10.00	J641	2771763.848	40388925.790	20.02	J660	2771466.894	40388683.110	19.92	J679	2771289.813	40388563.292	19.99	J698	2770978.161	40388348.751	19.95	J717	2770769.257	40388208.343	20.00	J755	2770260.827	40387868.805	20.07				
J623	2771901.401	40389026.081	10.00	J642	2771748.872	40388921.741	19.86	J661	2771449.745	40388681.172	19.92	J680	2771283.944	40388551.135	20.22	J699	2770961.450	40388337.846	19.96	J718	2770769.257	40388208.343	20.04	J756	2770260.658	40387868.805	20.00				
J624	2771893.871	40389019.581	10.00	J643	2771733.990	40388919.520	19.93	J662	2771433.054	40388670.892	19.92	J681	2771269.560	40388524.990	20.06	J700	2770944.438	40388327.408	20.05	J719	2770769.257	40388208.343	20.04	J757	2770260.481	40387868.805	19.85				
J625	2771886.341	40389012.921	10.00	J644	2771719.160	40388916.182	19.92	J663	2771418.643	40388665.610	19.89	J682	2771243.636	40388524.990	20.06	J701	2770926.778	40388317.905	20.04	J720	2770663.661	40388116.025	20.24	J758	2770260.313	40387868.805	19.87				
J626	2771878.811	40389006.340	10.00	J645	2771704.400	40388912.798	19.90	J664	2771400.416	40388648.106	19.89	J683	2771228.366	40388511.955	19.94	J702	2770909.860	40388307.172	20.11	J721	2770584.966	40388110.925	20.44	J759	2770260.147	40387868.805	19.79				
J627	2771871.281	40388999.780	10.00	J646	2771689.432	40388909.690	19.89	J665	2771384.081	40388636.762	4.98	J684	2771212.825	40388499.478	19.86	J703	2770892.862	40388298.421	20.53	J722	2770565.913	40388102.913	20.44	J760	2770260.637	40387868.805	19.74				
J628	2771863.751	40388993.180	10.00	J647	2771673.964	40388947.112	19.99	J666	2771380.016	40388633.885	10.06	J685	2771196.467	40388468.216	19.92	J704	2770878.403	40388281.851	19.89	J723	2770548.646	40388092.636	13.21	J761	2770260.366	40387868.805	19.71				

泉州市大地岩土地质有限公司



2024年10月数字化制图。  
2000国家大地坐标系，中央子午线120度。  
1985国家高程基准。  
1990年版本式。

第5页 共6页  
泉州市大地岩土地质有限公司 (3)  
测绘资质：乙级  
证书编号：测字35502539  
发证机关：福建省自然资源厅

